

Wareena Park - A Multi Generational Park for All

Draft Masterplan

Issued for Discussion - 07/04/20



Wareena Park Master Plan - A Multi-Generational Park for All

Developing the Master Plan

The Rural City of Wangaratta is developing a Master Plan to guide future improvements to Wareena Park.

This is the opportunity to make improvements to Wareena Park so it will continue to be a popular neighbourhood park for years to come.

Through the engagement activities held to date we have heard lots of great ideas. The key messages we've heard include:

- The Park is used regularly for sports and recreation activities, however there is opportunity to provide more reasons to visit;
- The experience of visiting the Park could be improved with the addition of seating, play areas, BBQ facilities and more vegetation;
- Wareena Oval and the sports facilities require improvements;
- The Ed Tippet Pavilion is no longer for purpose; and
- Access into the site could be improved.

Have your Say

This is your opportunity to have your say in shaping the future of Wareena Park.

This document outlines what you have told us is important to consider when making improvements to the Park's facilities, infrastructure and amenity.

The document outlines:

1. Future vision for Wareena Park,
2. Key strategies that support this vision,
3. Key projects to deliver this vision.

What we need now is for you to tell us:

- **Which element of the vision and strategies do you think is most appropriate for Wareena Park?**
- **Which projects would you like to see delivered first?**
- **Are there other elements of the master plan you would like to see included?**

Your feedback will be used to finalise and deliver the Master Plan for Wareena Park.



Proposed Masterplan for Wareena Park (For Discussion Purposes Only)

Wareena Park Master Plan - A Multi-Generational Park for All

Our Vision for Wareena Park

Through various engagement activities the community and other stakeholders have told us what they love and also what they want improved at Wareena Park.

We've translated these aspirations, and built on its current strengths as a sports and recreational destination, into a holistic future vision.

A vision captures the 'essence' of the place we are trying to improve. The shared vision for the future Wareena Park summarises the overall look and feel of the place we are working towards delivering, and incorporates community and stakeholder aspirations.

**Our vision for Wareena Park is:
"To transform Wareena Park
into a multi-generational
place for all."**

Specifically this vision seeks to;

- Create opportunities for social connections across generations;
- Invite and inspire people of all ages to be physically active;
- Remove the barriers that prevent people visiting and enjoying the park facilities;
- Support the sports clubs and community groups who call Wareena home; and
- Encourage more people to use the park facilities regularly.



Proposed Masterplan for Wareena Park (For Discussion Purposes Only)

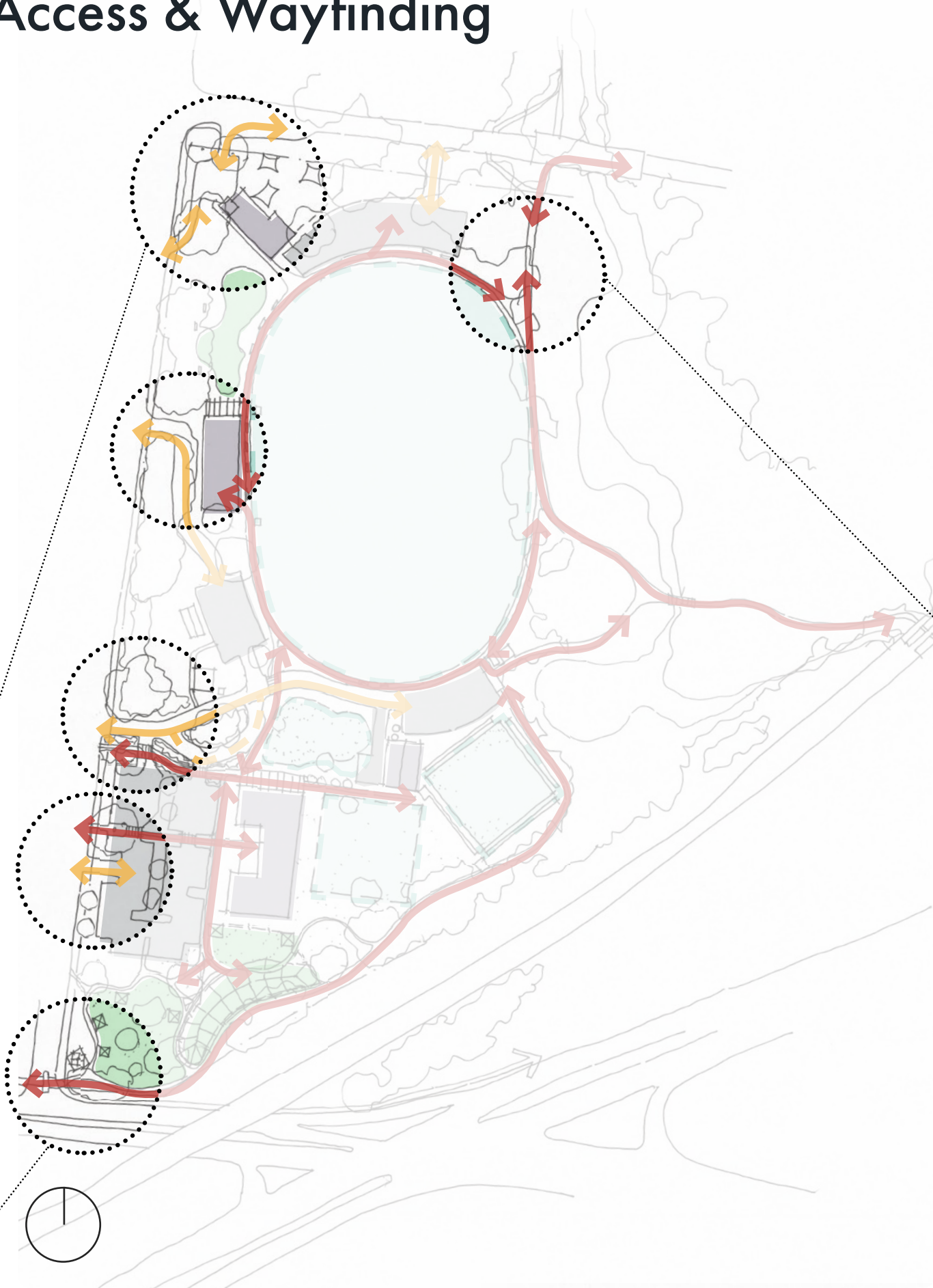
Strategy 1. Improve Access & Wayfinding



Proposed reconfiguration of the entry & exit to Coronation Kindergarten



Continuation of the One Mile Creek shared path to connect to existing & emerging neighbourhoods



Highlight the northbound shared path and its connection to the Health & the Train Station Precincts. On completion of the Docker Street improvements people will be able to comfortably walk from Wareena Park into the CBD

Legend

Community Buildings

Interactive Spaces

Active and Recreational Spaces

Carparks

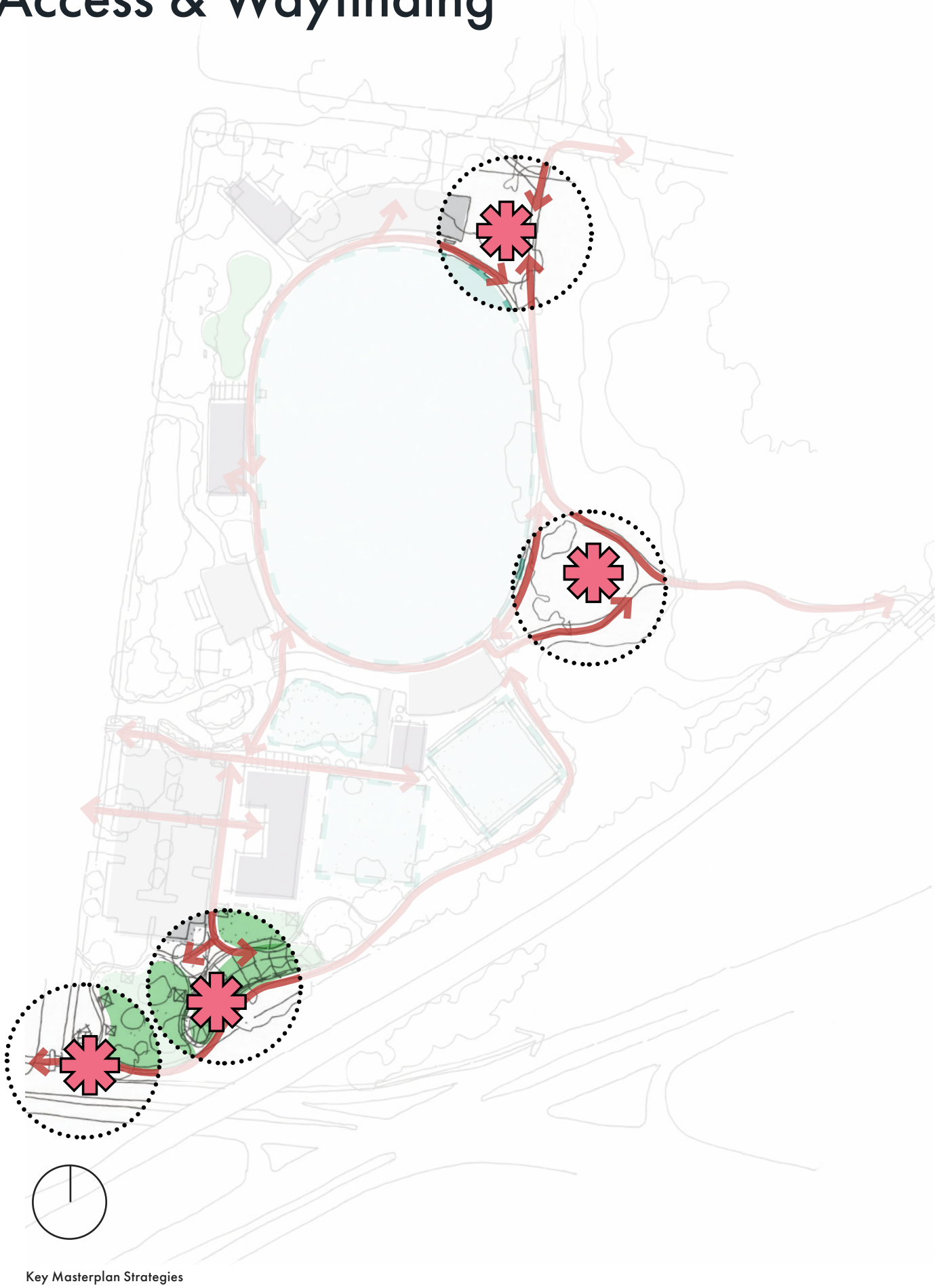
Pedestrian Connectivity

Vehicle Accessibility

Strategy 1. Improve Access & Wayfinding



A series of landmarks, wayfinding devices or art interventions could be located at key decision points to guide users through the precinct. The key decision points are the south west entrance and the connections to the One Mile Creek Shared Path.



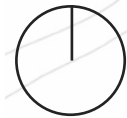
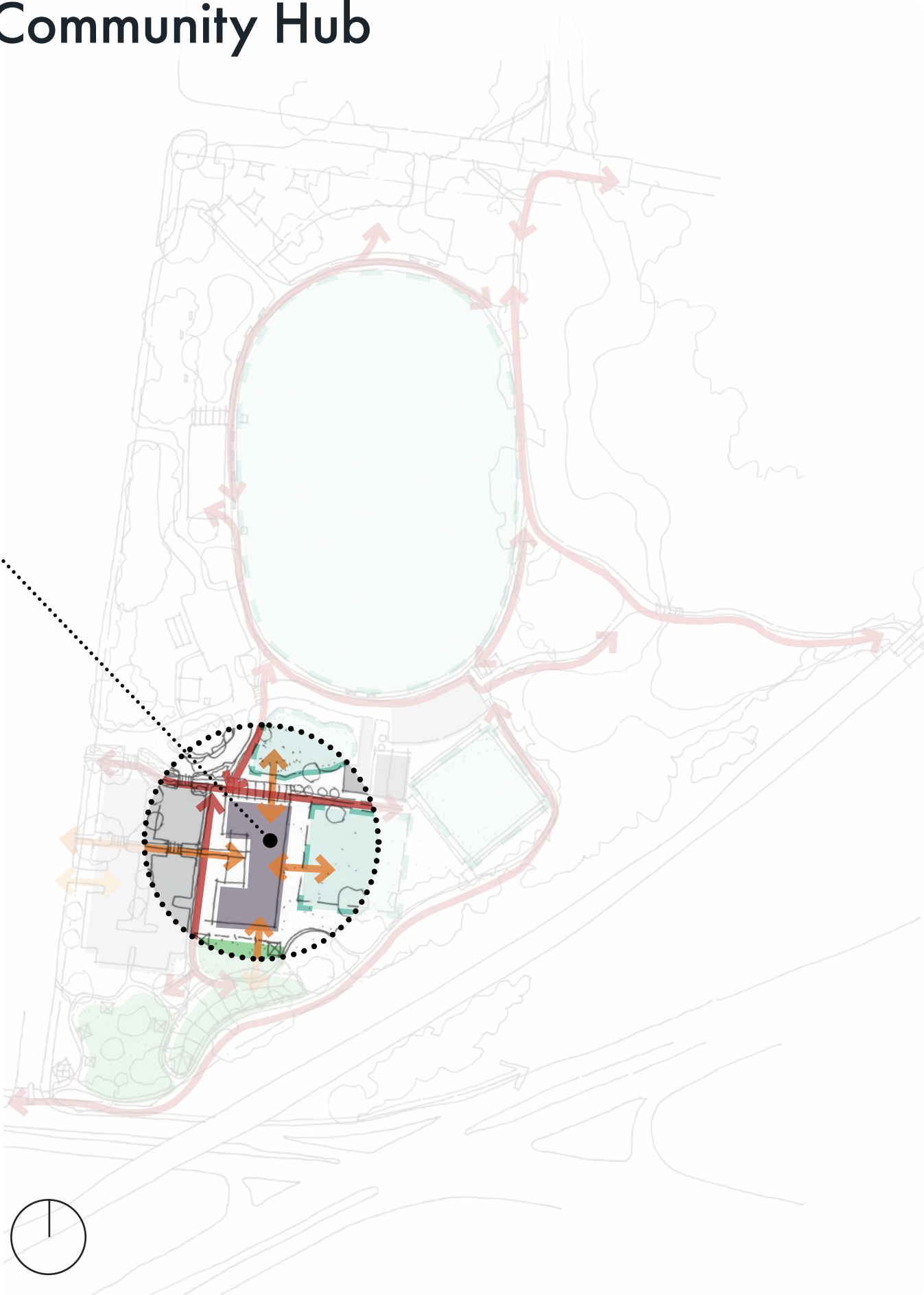
Lets continue to use wayfinding palette that has been established for the Rural City of Wangaratta.

Legend	
	Community Buildings
	Interactive Spaces
	Active and Recreational Spaces
	Carparks
	Pedestrian Connectivity
	Wayfinding/Public Art Intervention

Strategy 2. Create a Community Hub



A community hub could be the key attractor located in the southern precinct providing indoor and outdoor facilities for community use.



Key Masterplan Strategies

Legend

Community Buildings

Interactive Spaces

Active and Recreational Spaces

Carparks

Pedestrian Connectivity

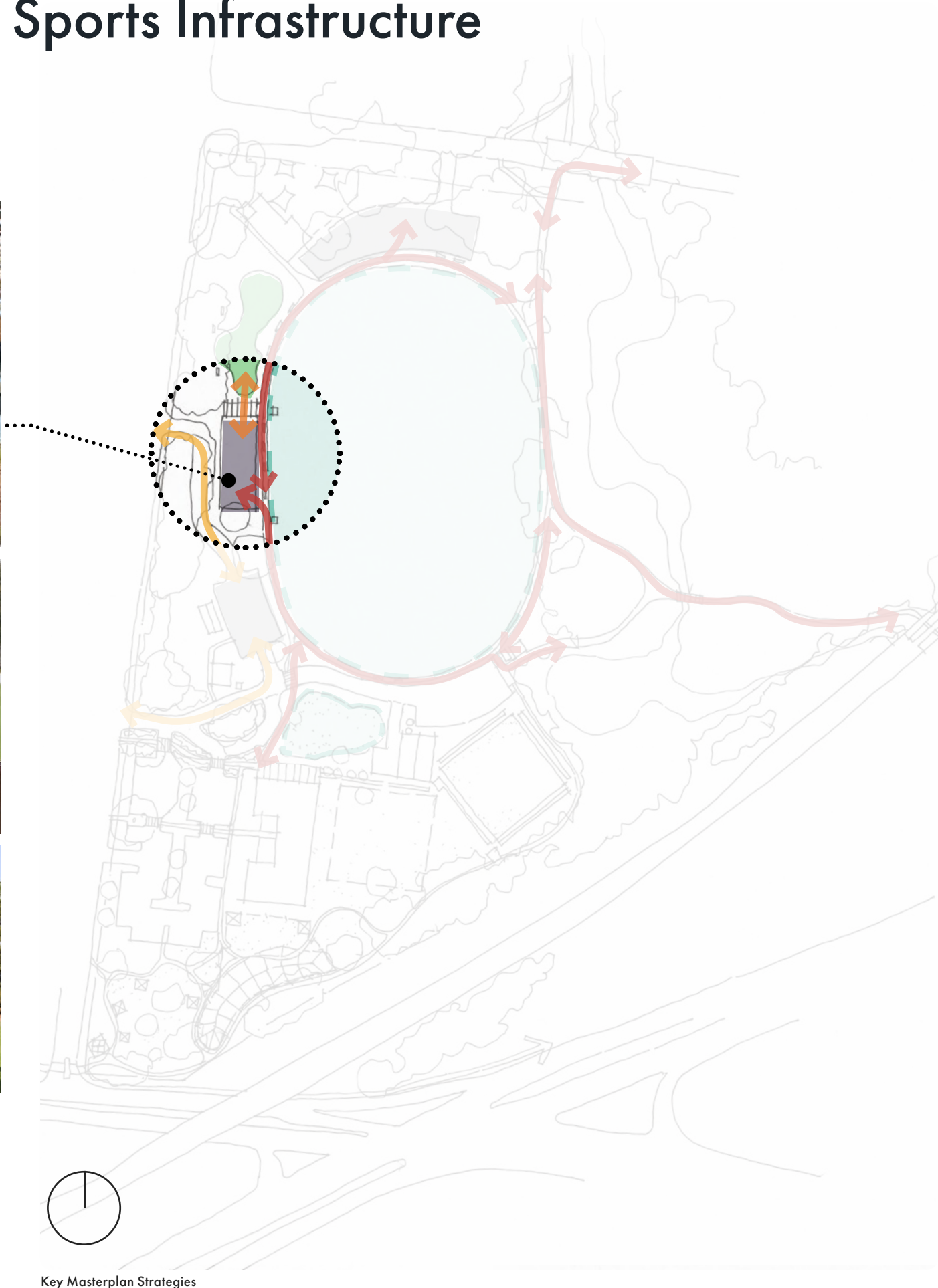
Vehicle Accessibility

Connecting Spaces

Strategy 3. Improve Sports Infrastructure



A new sports pavilion situated adjacent to Wareena Oval could be the focus of the northern precinct, supported by improvements to the Oval and spectator amenities.



If situated on the western side of the Oval, views from the pavilion would take in Wareena Wetlands.

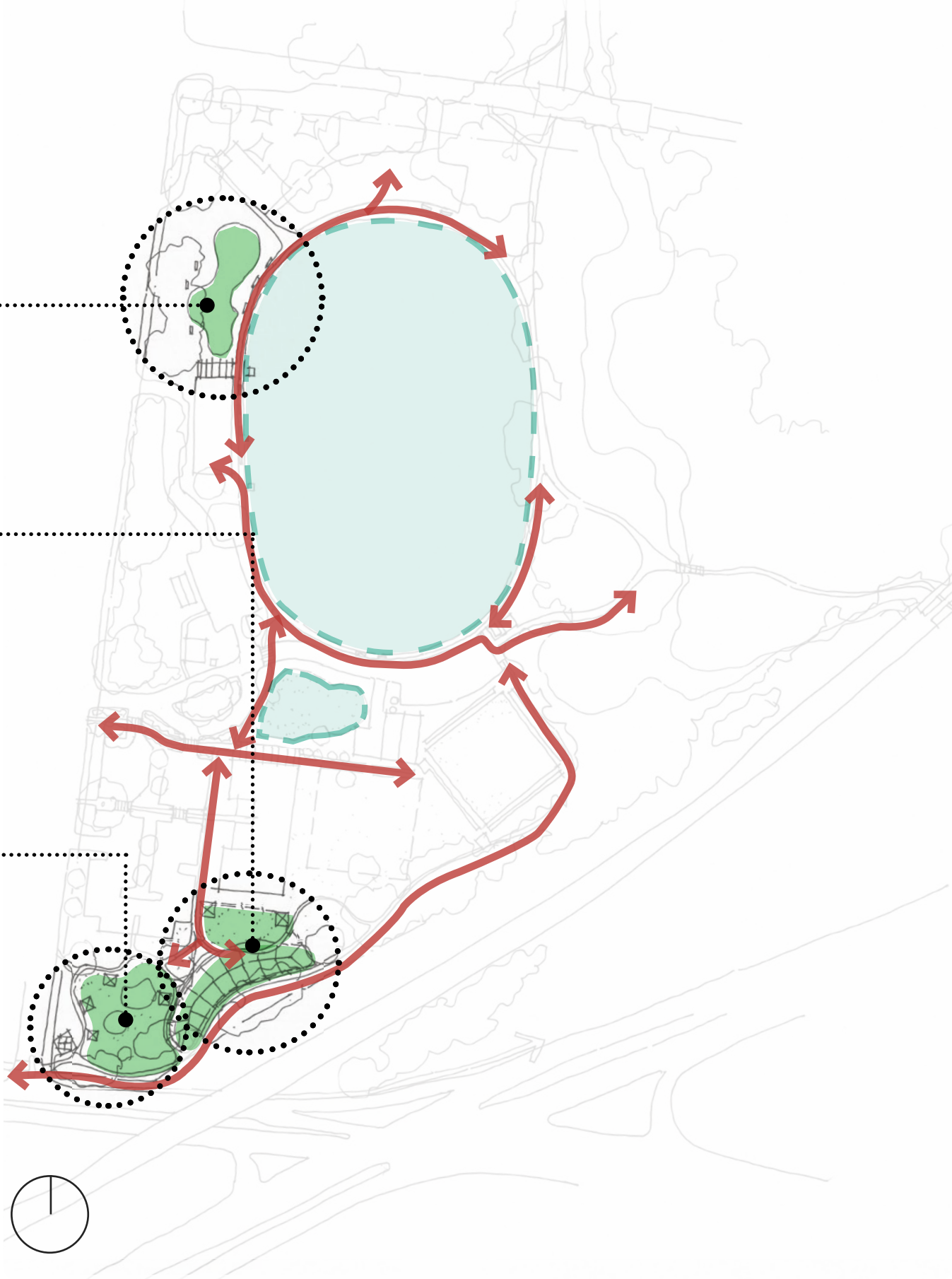
Legend

- Community Buildings
- Interactive Spaces
- Active and Recreational Spaces
- Carparks
- Pedestrian Connectivity
- Vehicle Accessibility
- Connecting Spaces

Strategy 4. Provide a Range of Play Spaces that Bring People Together



Creating nature based play spaces that encourage older siblings, parents and grand parents to engage with the activities and environment .



Key Masterplan Strategies

Legend

Interactive Spaces

Active and Recreational Spaces

Pedestrian Connectivity

Strategy 5. Connect to the Shared Path Network





Encouraging more walking and cycling activities within the Park, as well as connecting to the wider shared path network.



Key Masterplan Strategies

Legend

 Pedestrian Connectivity

 Signage/Wayfinding Public Art

Key Master Plan Projects

The following key projects have been identified to deliver these strategies. The following pages broadly outline these projects for your consideration;

- 1 Community Hub Building
- 2 Seniors Exercise Area
- 3 Picnic And Gathering Space
- 4 Nature Based Adventure Play/Recreational Area
- 5 Future Bowling Club Expansion
- 6 Events Lawn
- 7 Main Carpark Reconfiguration
- 8 Wayfinding/Signage Element
- 9 Wareena Park Oval Improvements
- 10 Dedicated Sports Pavilion
- 11 New Sports Entrance, Drop Off Area & Car Park
- 12 Junior Play & Spectator Viewing Area
- 13 Seating Options
- 14 Coronation Kindergarten Entrance/Exit
- 15 Formalised Car Park
- 16 Cycling Launch Spot
- 17 Fitness Circuits

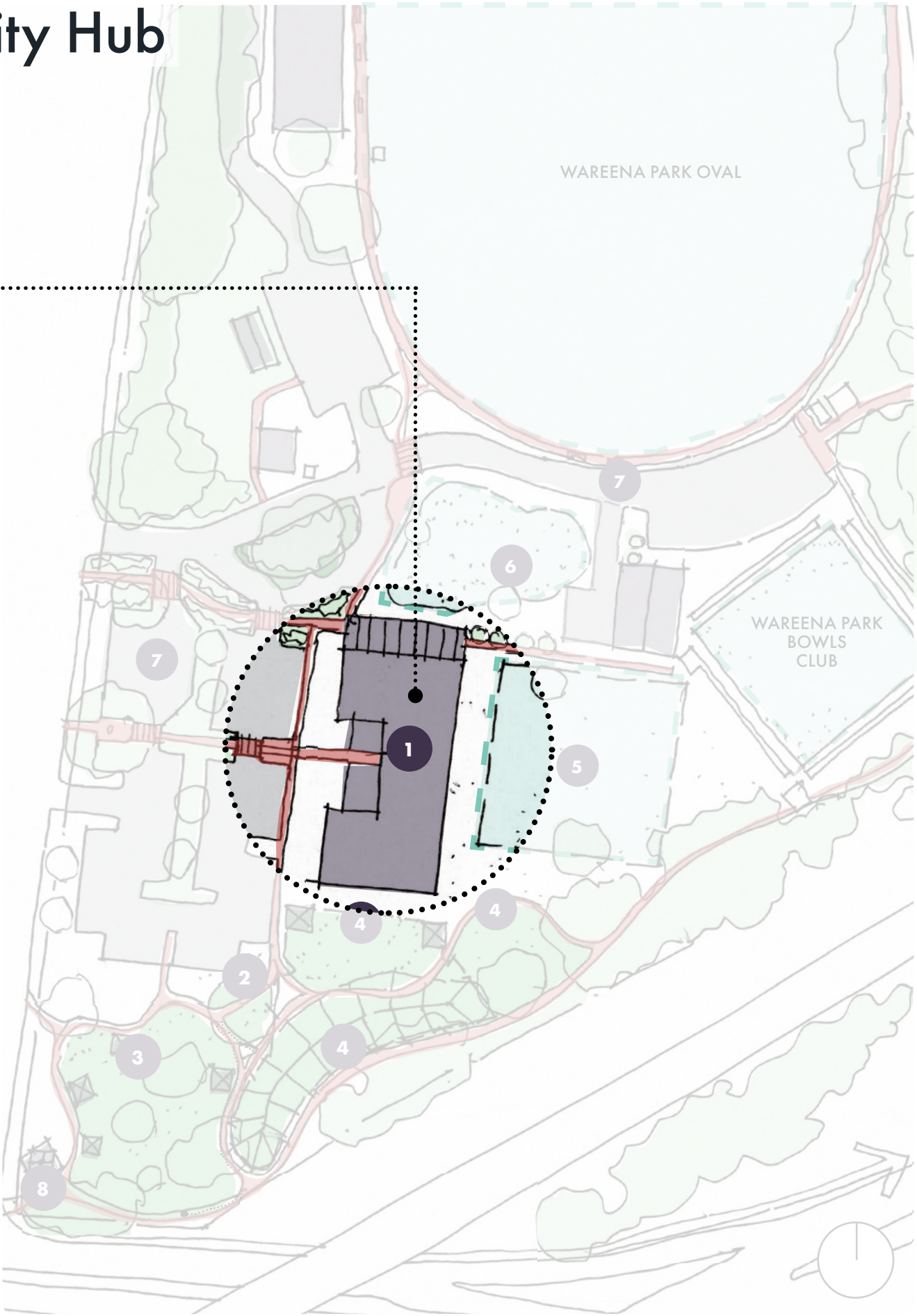


Key Masterplan Projects (For Discussion Purposes Only)

Project 1. The Community Hub



Proposed multi-functional community facility could be located in the heart of the park. This building could provide community groups with a purpose built community hall, storage, office space, kitchen & toilet facilities. Users could access the range of surrounding outdoor facilities and activities. The building could be located adjacent to the main car park and accessible via the One Mile Creek Path.



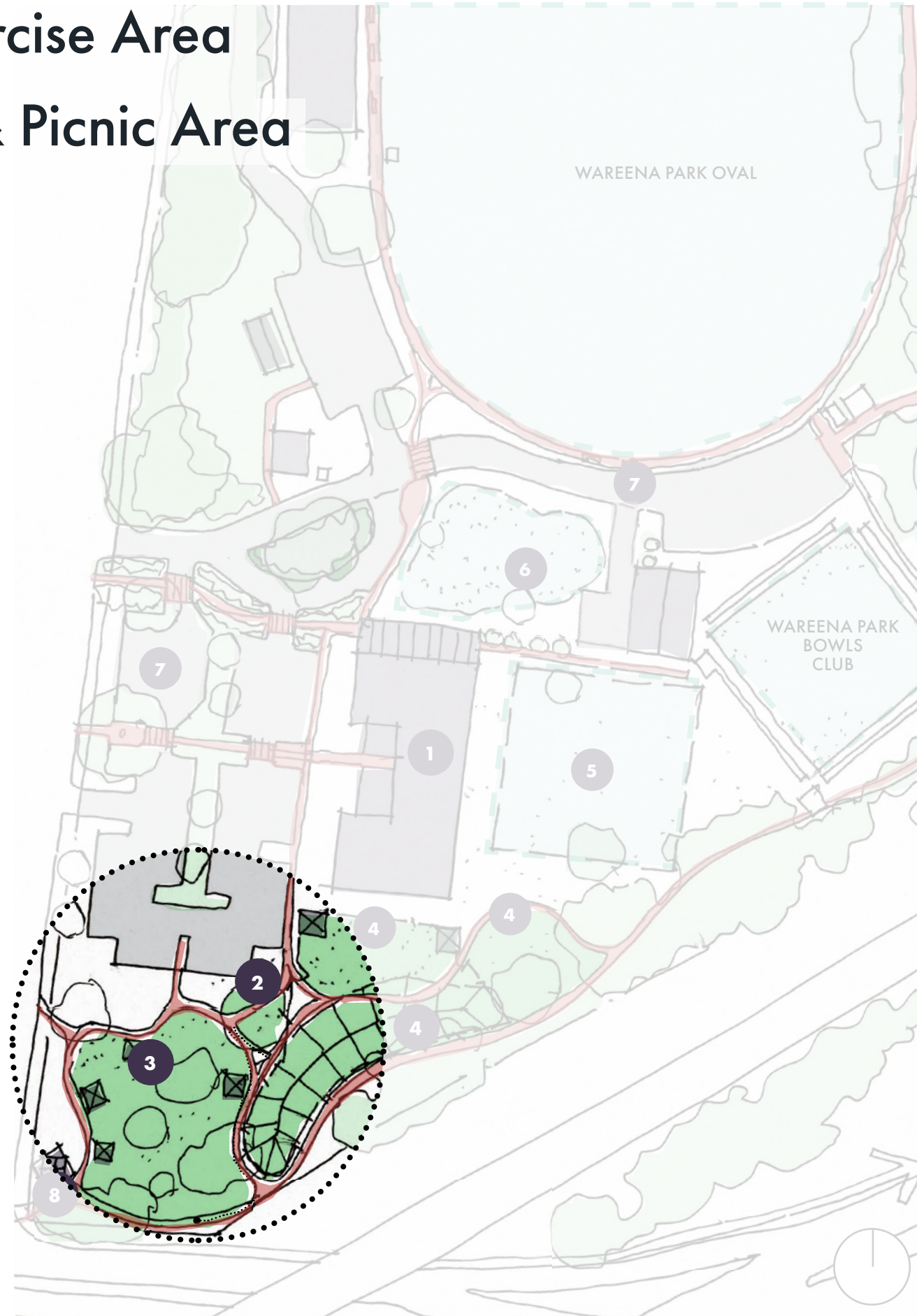
Key Masterplan Projects in the Community & Wellbeing Precinct

Project 2. Seniors Exercise Area

Project 3. Gathering & Picnic Area



A dedicated seniors exercise area could be located close to the main car park and community building. This area could provide a range of outdoor equipment designed specifically for older people. Exercise equipment could be tailored to help improve strength, movement and mobility.



Key Masterplan Projects in the Community & Wellbeing Precinct



A sheltered picnic area with BBQ facilities could be the central focus in the southern corner of the park. It could be a comfortable place for people to meet and children to play.

Project 4. Nature Based Adventure Play & Recreational Area



Outdoor areas located around the Community Building could compliment the internal activities. For example the garden could be flexible by providing an integrated sensory, contemplation and play space.



Key Masterplan Projects in the Community & Wellbeing Precinct

Project 5. Future Bowling Club Expansion Area

Project 6. Events Lawn



Space could be allocated for an additional bowling green if required. In the short term this space, and the area located to the north of the Community Building, could function as adaptable outdoor spaces. To be used by community groups to stage small, temporary events and informal gathering spaces.



Key Masterplan Projects in the Community & Wellbeing Precinct

Project 7. Main Car Park Reconfiguration

Project 8. Wayfinding & Signage



The main car park could be reconfigured to gain parking efficiencies and improve pedestrian safety. Delineating parking bays with line marking could create approximately 120 defined car spaces. Defined pedestrian paths could separate people from vehicles.

Coaches restricted to accessing and parking in the bay adjacent to Swan Street. The dedicated RV dump point will be retained. There will be no net loss in car parking across the site.



Key Masterplan Projects in the Community & Wellbeing Precinct



Strategic signage could be situated to welcome and guide visitors.

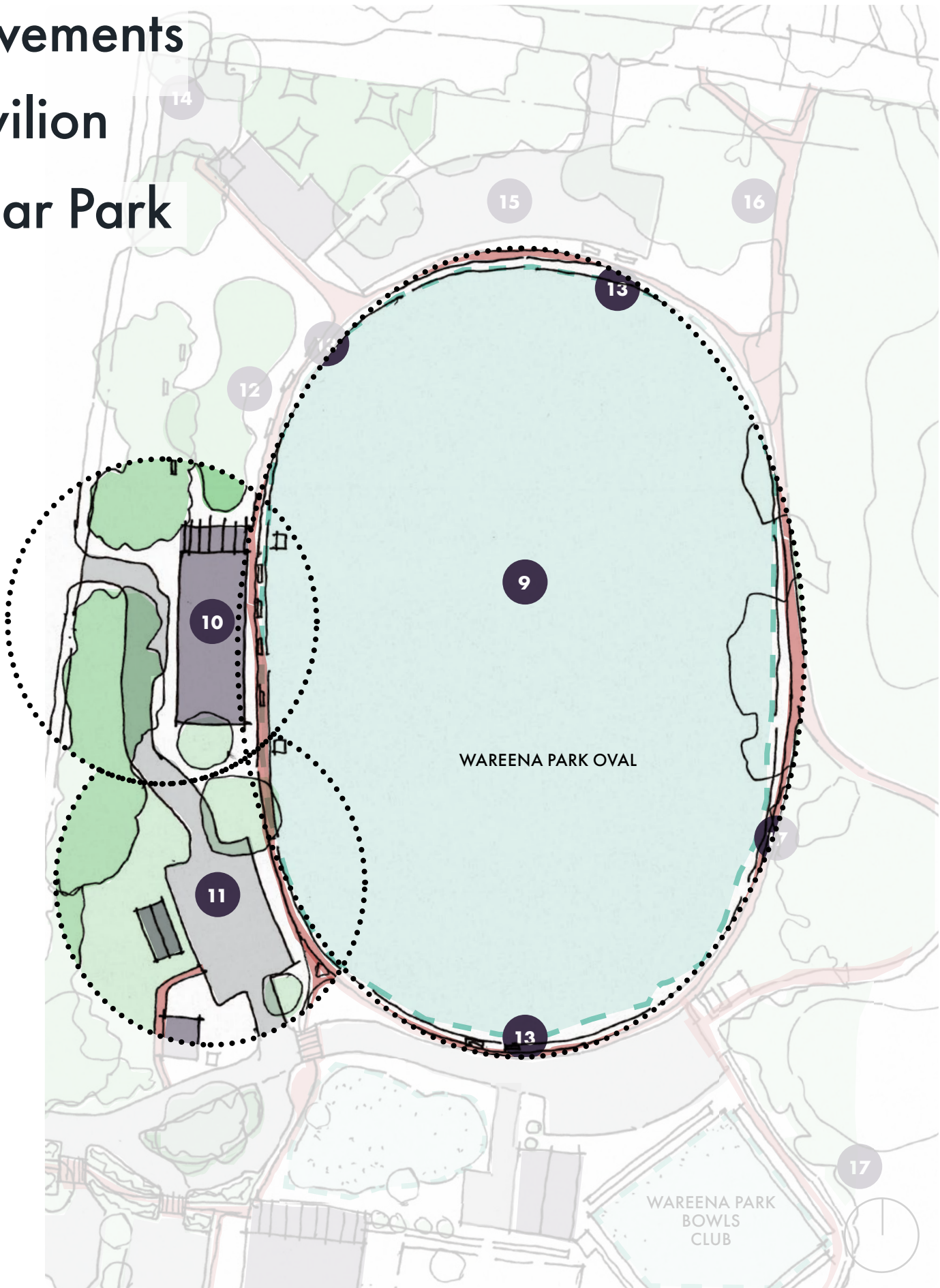
Project 9. Oval Improvements

Project 10. Sports Pavilion

Project 11. Pavilion Car Park



A dedicated sports pavilion could be located on the western side of the Oval. Key functions include: club rooms to hold meetings, events and information sessions, as well as dedicated storage, canteen, change rooms, toilets and under cover viewing areas.



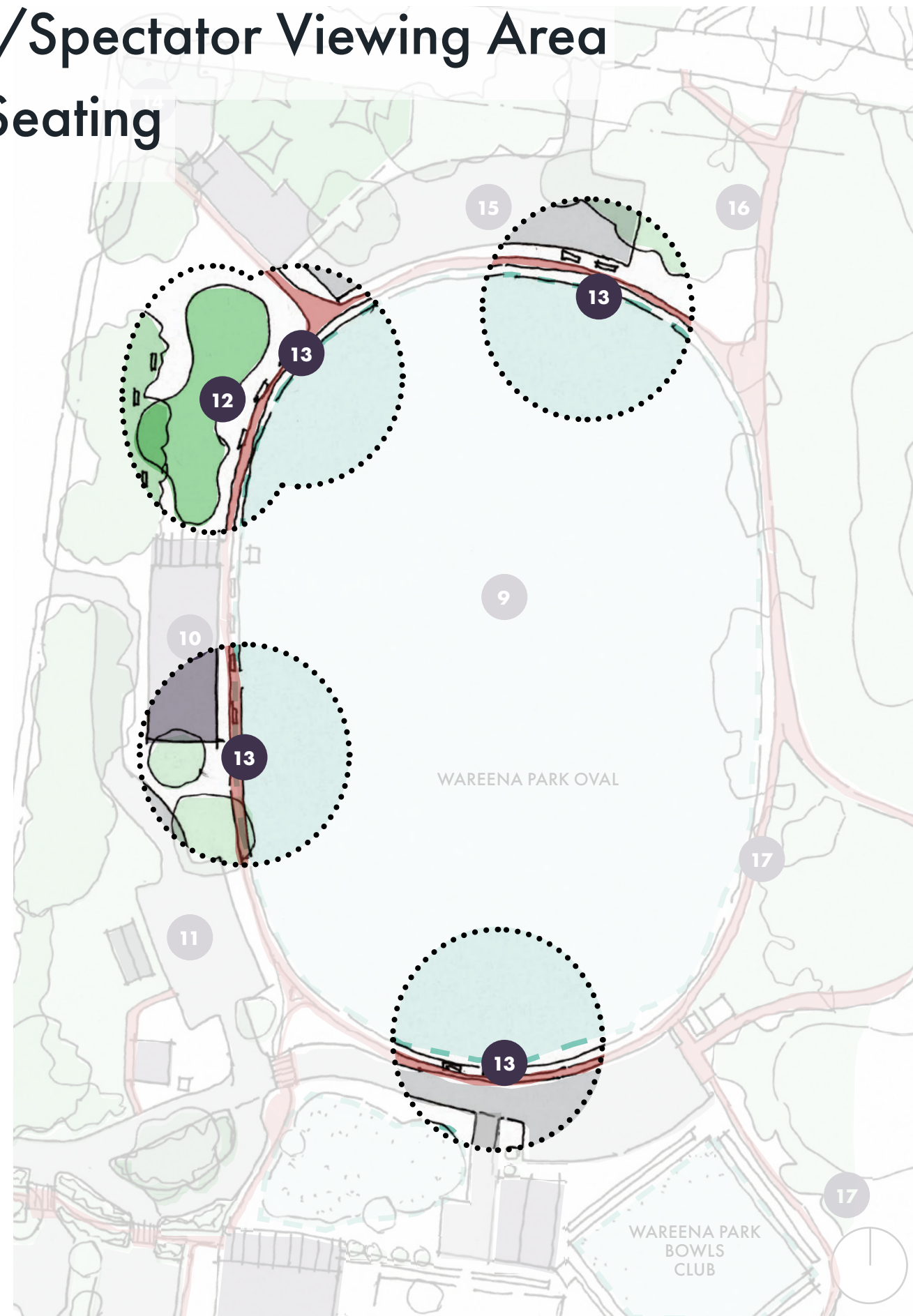
Key Masterplan Projects in the Sports & Recreation Precinct

Project 12. Junior Play/Spectator Viewing Area

Project 13. Spectator Seating



Located to the north of the Sports Pavilion could be an integrated play and sports viewing area. This would provide younger children with an area to play whilst their siblings are participating in sports on the Oval.



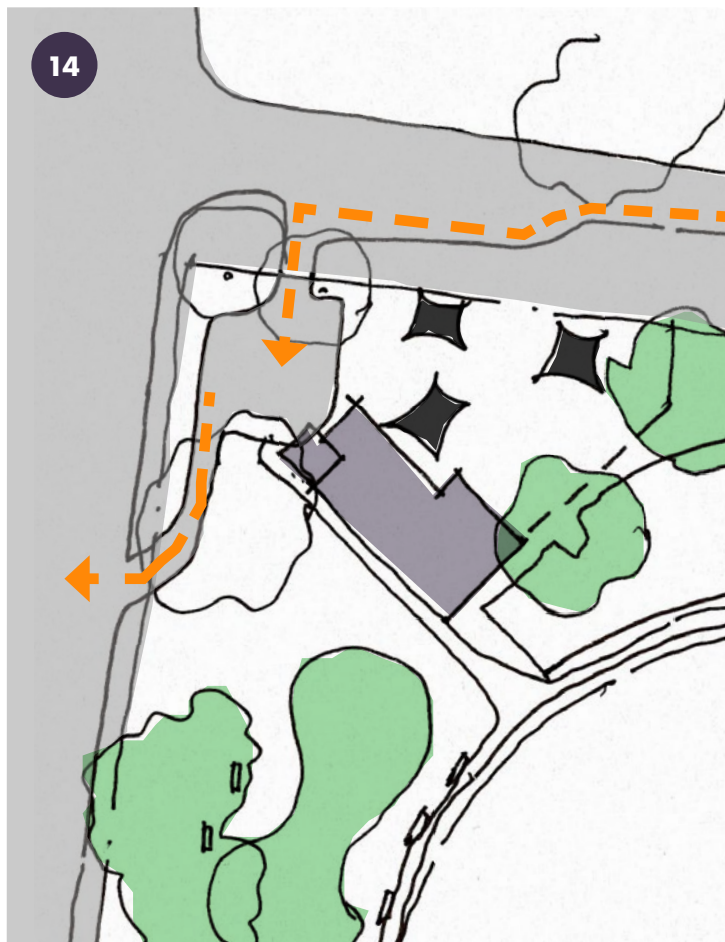
Key Masterplan Projects in the Sports & Recreation Precinct



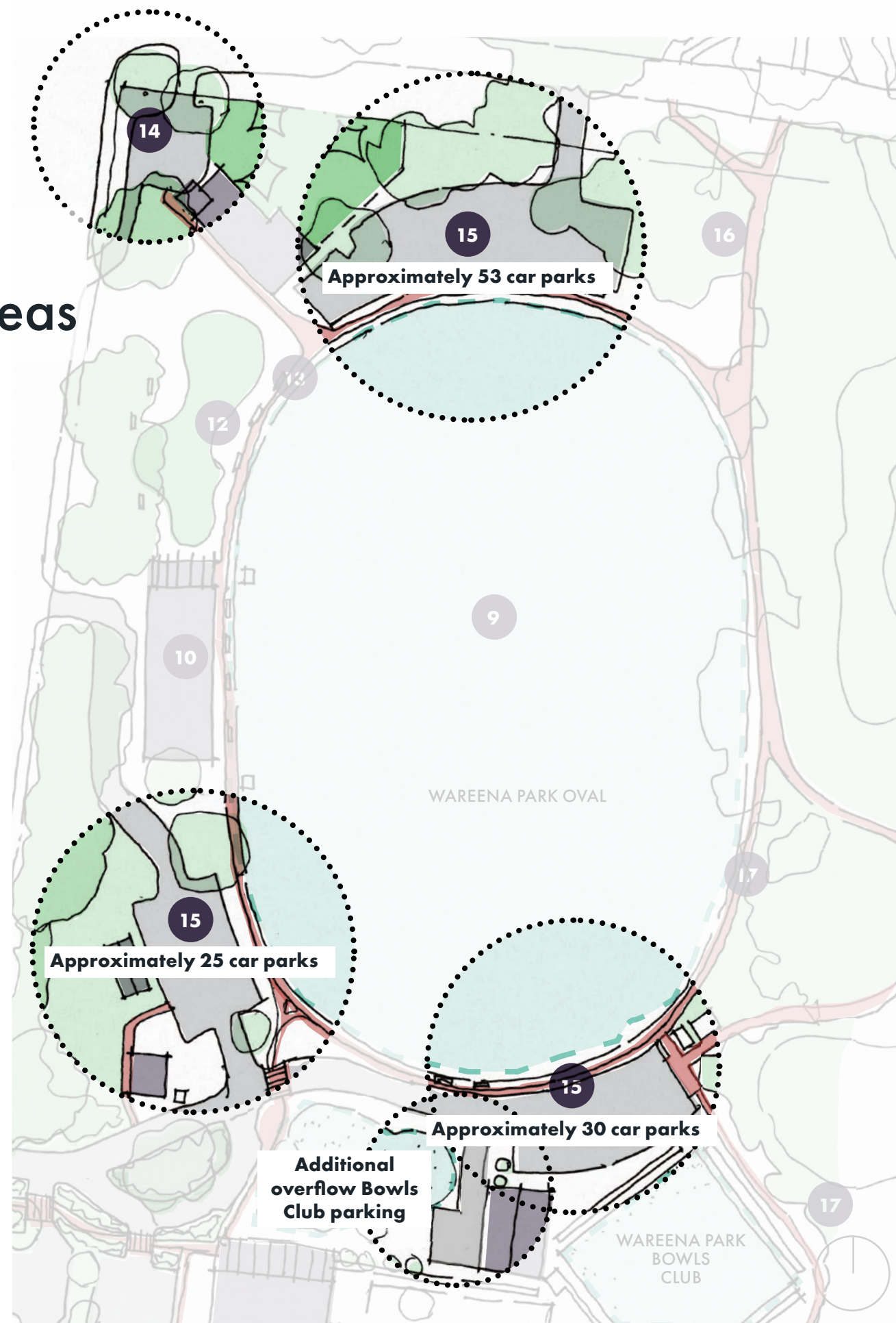
More seating options for spectator should be strategically located around the oval, as well as throughout the precinct, to enjoy the wider recreational facilities.

Project 14. Kindergarten Carpark

Project 15. Formalise Secondary Parking Areas



Access to Coronation Kindergarten could be rationalised to one entry and one exit point. A slip lane on Roy Street could be the single point of entry and one single exit point could provide an exit onto Swan Street.



Key Masterplan Projects in the Sports & Recreation Precinct



Car parking amenity could be improved by providing shade and separated pedestrian paths. Carpark rain gardens can filter stormwater as well as provide landscape features to delineate car spaces and boundaries between the car parks and adjacent uses. Efficiencies can be gained by defining parking bays.

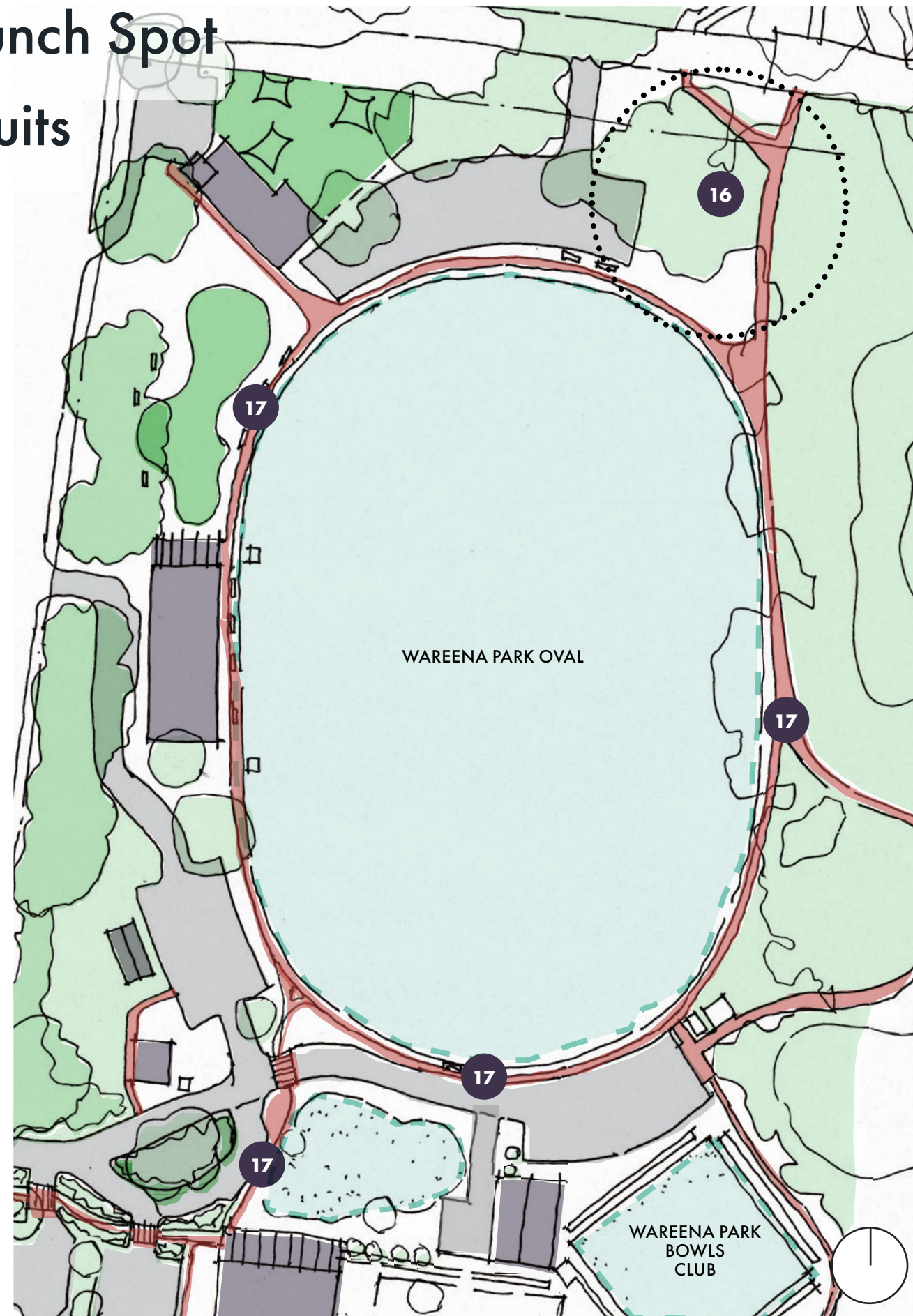
*Suggested Bowls Club parking arrangement - in the case when the car park in front of the building is full, overflow parking could be provided along the western edge of the Bowls Club building for members of the Bowling Club. Permeable paving is the recommended treatment for the access and area of overflow parking.

Project 16. Cycling Launch Spot

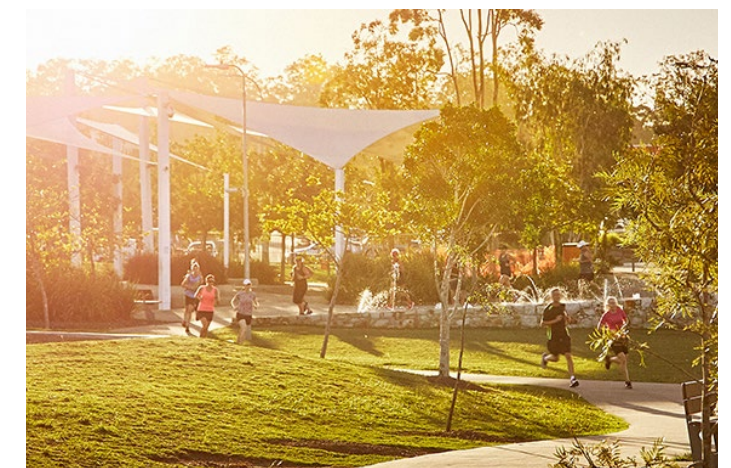
Project 17. Fitness Circuits



A cycling (or walking) launch spot could be created in the north eastern section of the Park. This could be a comfortable spot to meet friends for a walk or ride along One Mile Creek. Its an ideal spot to put a sign displaying how to access Wangaratta's extensive shared path network.



Key Masterplan Projects in the Sports & Recreation Precinct



Exercise circuits connecting pathways could provide a range of walking/running circuits throughout the Park, and connect into the wider shared path network (500m, 1km & 10+ km off road circuits).

Thank-you for your time.

Please provide your feedback via our online survey:

www.wangaratta.vic.gov.au

Alternatively you can email us at: council@wangaratta.vic.gov.au

or send a written response to: PO Box 238, Wangaratta Vic 3676

